

FHIVE Studio.

Times & Open Hours	2
Studio 1	2
Studio 2	2
Studio 3	2
Pricing	3
Membership	3
Packages	3
Pay as you go	3
Upgrades	4
Overtime	4
Weekend Fee	4
Equipment	5
Lights	5
Accessories	5
Studios Specifications	6
Floor Plan	6
Studio 1	7
Studio 2	8
Studio 3	9

Address: [458 Hackney Road, E29EG London UK](#)

Email: studio@fhive.me

Website: <https://fhive.me>

Contact: +44(0)7566801709



Times & Open Hours

Studio sessions are broken down into daily time slots.

Studio 1

3 slots a day, 7 days a week.

Slot A (08:00 - 12:30) 4.5 hours

Slot B (13:00 - 17:30) 4.5 hours

Slot C (18:00 - 22:30) 4.5 hours

Studio 2

2 slots a day, 7 days a week.

Slot A (08:00 - 14:00) 6 hours

Slot B (15:00 - 21:00) 6 hours

Studio 3

3 slots a day, 7 days a week.

Slot A (08:00 - 12:30) 4.5 hours

Slot B (13:00 - 17:30) 4.5 hours

Slot C (18:00 - 22:30) 4.5 hours

Green Room

Open all week from 8am till closing time.

Can be hired on an hourly basis £35 per hour.

Please email us for Green Room enquiries.



Pricing

Membership

Monthly Payments

Casual Membership	£29.99 per month for 6 months (single monthly slot in studio 1)
Pro Membership	£79.99 per month for 6 months (3 monthly slots in studio 1)

Packages

Single Payments

Lite Package	£300 for 3 months (5 slots in studio 1)
Big Package	£500 for 6 months (10 slots in studio 1)
S2 Package	£490 for 3 months (4 slots in studio 2)
S3 Package	£300 for 3 months (4 slots in studio 3)

Pay as you go

Single Payments

Studio 1	£69.99 - per slot
Studio 2	£180 - per slot
Studio 3	£90 - per slot



Upgrades

Existing Memberships

Studio 1	£60 - additional slot
Studio 2	£120 - per slot
Studio 3	£30 - per slot

Overtime

Only made possible if there are no slot sessions booked after the current one.

Studio 1	£20.00 - per hour
Studio 2	£30.00 - per hour
Studio 3	£30.00 - per hour

Weekend Fee

£10 for a weekend slot, Saturday & Sunday.

Overnight Holding

Overnight holdings of equipment will need a liability release form signed and it is £25.00.

Green Room

Our communal green room can be hired exclusively if you are using it alongside your studio shoot for £35 an hour.



Equipment

Lights

Flash set BRX500	£60
Arri 650 Plus	£18
Redhead 800W Tungsten	£12
LED Stick Encapsulate	£12

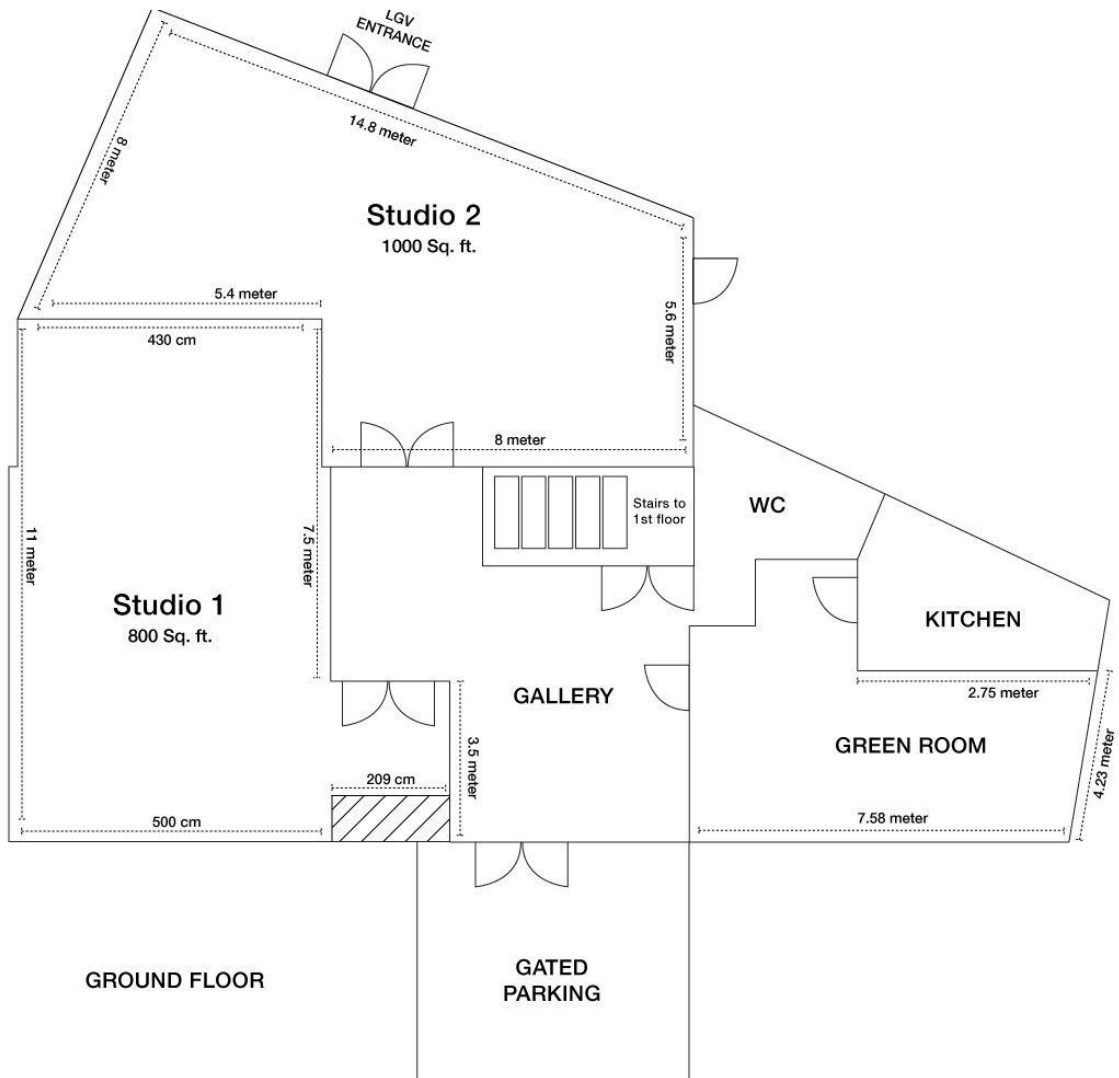
Accessories

C-stand/ Wheel stand	£8
Giant Octa (150cm)	£14
Umbrella (152cm)	£9
Reflectors pack	£5
External Equipment	£30
Jiffy Steamer	£6
Sound system	£3
Colorama (per meter)	£10
External Flash kit	£10
Tripod	£12



Studios Specifications

Floor Plan



Studio 1



800 sq.ft white space, a full blackout studio with concrete floors, white walls, and wooden beams. Studio 1 is ideal for e-commerce, product photography, model shoots, and filming.

- 800 sq.ft
- 3.4 meter ceiling height
- Ground floor
- Full blackout, white walls
- Concrete Floors
- Makeup, mirror & desk
- Sitting area with sofa
- Backdrop wall mount & roller system (2.72m wide)
- 5 X black / white poly boards with stands
- 5 X sandbags
- High speed wireless broadband
- Extension cord
- 3 meter clothing rail
- 10 X wooden hangers
- 25 X metal hangers
- Handheld iron
- 3 Phase electrics
- 63/ 32amp outlets



Studio 2



1000 sqft studio with an infinity cove, 4.5m ceiling height on the ground floor. It is a full blackout with LGV access. Studio 2 is great for large productions and videography.

- 1000 sq.ft
- 4.6 meter ceiling height
- Ground floor
- Full blackout
- 5 meter wide infinity cove
- LGV Access
- Makeup, mirror & desk
- Sitting area with sofa
- 5 X black / white poly boards with stands
- 5 X sandbags
- High speed wireless broadband
- 3 meter clothing rail
- 10 X wooden hangers
- 25 X metal hangers
- Handheld iron
- 3 Phase electrics
- 63/ 32amp outlets



Studio 3



Magnificent daylight 650sqft studio, situated on the first floor. Wooden floors and oak beams. Ideal for indoors natural beauty photography & filming.

- 650 sq.ft
- 4.2 meter ceiling height
- First floor
- Daylight studio
- Wooden Floors & Oak Beams
- Backdrop wall mount & roller system
- Makeup, mirror & desk
- Sitting area with bench
- 5 X black / white poly boards with stands
- 5 X sandbags
- High speed wireless broadband
- Extension Cord
- 3 meter clothing rail
- 10 X wooden hangers
- 25 X metal hangers
- Handheld iron
- 3 Phase electrics
- 63/ 32amp outlets



Green Room



Our green room features a unique boho chic set for our guests to enjoy and relax or as a location feature for a production. Comes with a fully equipped kitchen.

